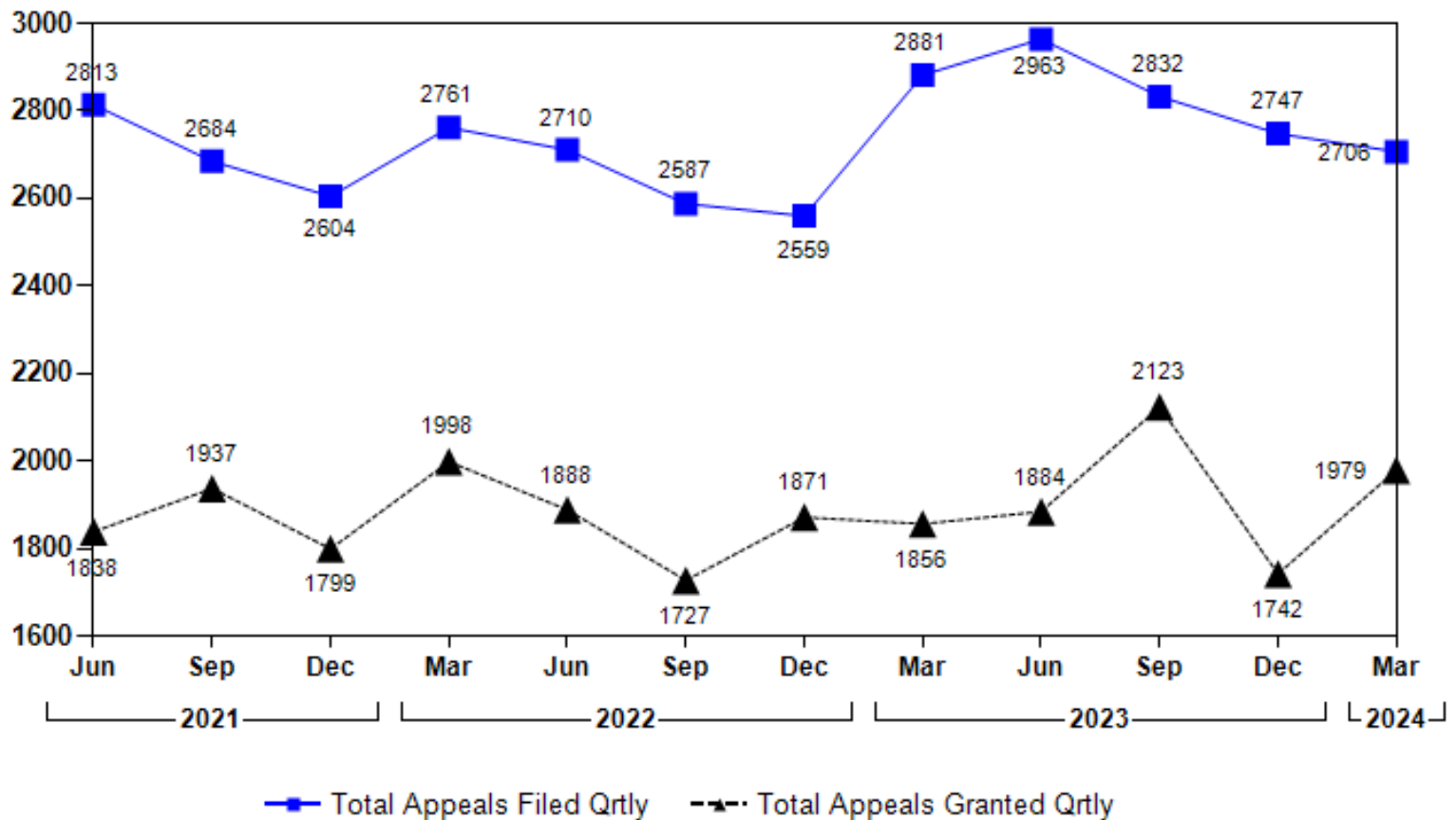
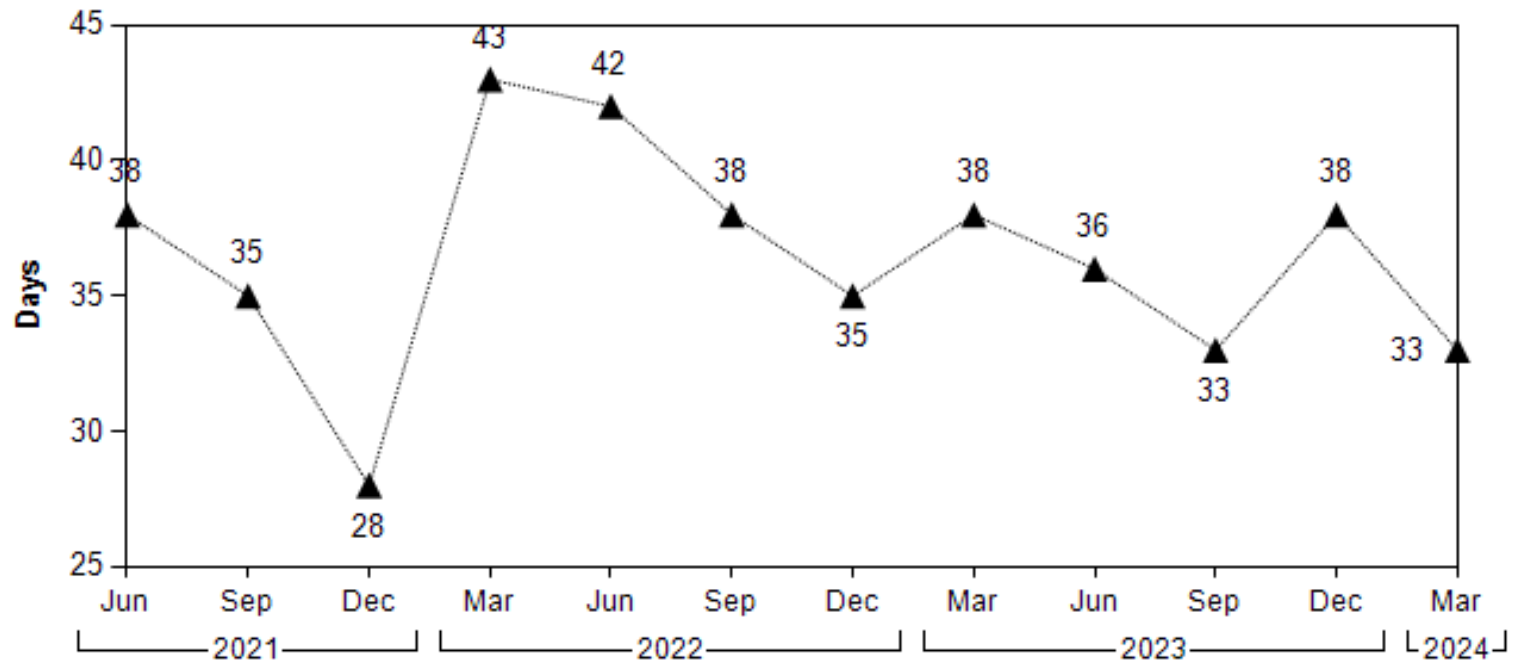


Total Appeals Filed and Granted

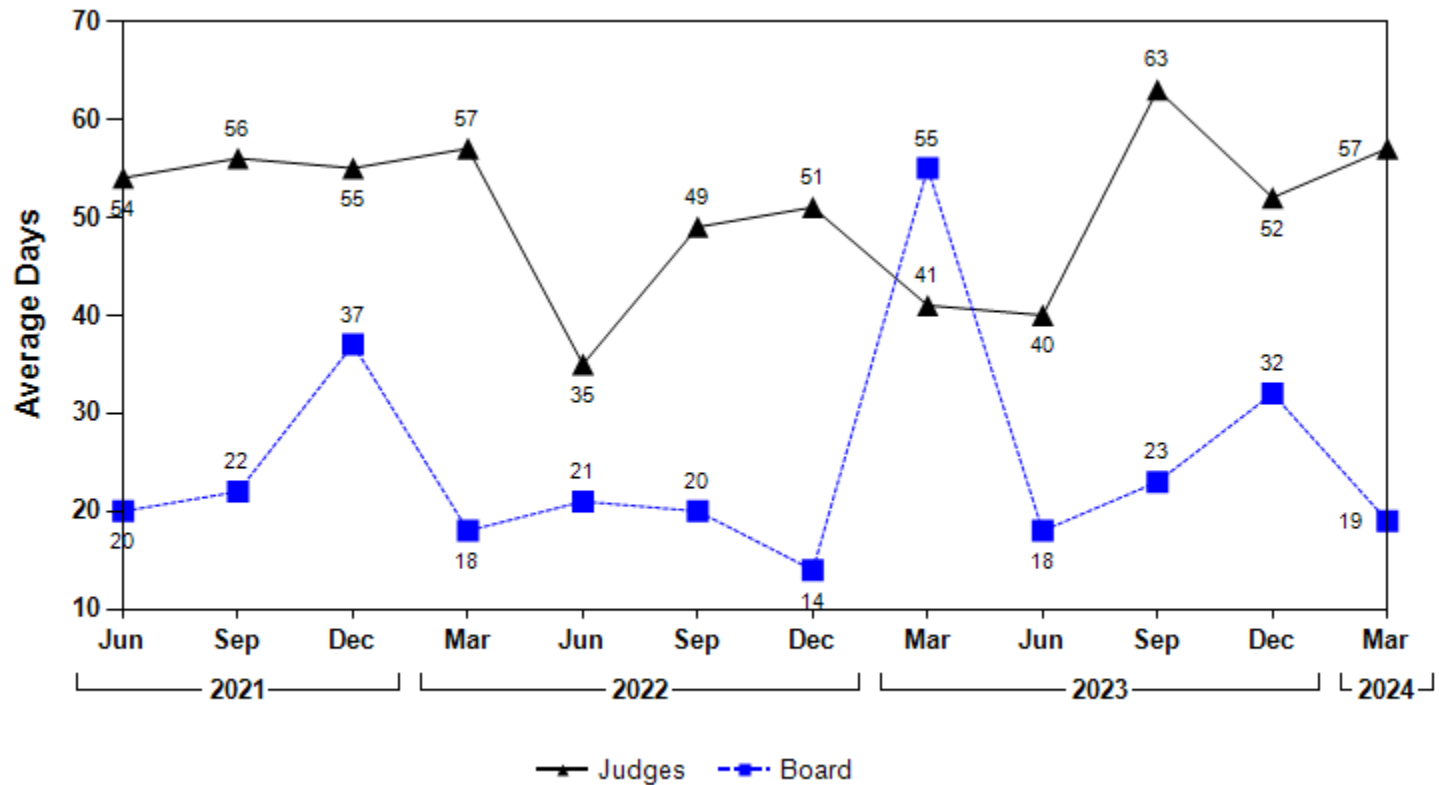


Average PD&O* Time-lag by Quarter for Hearing Judges



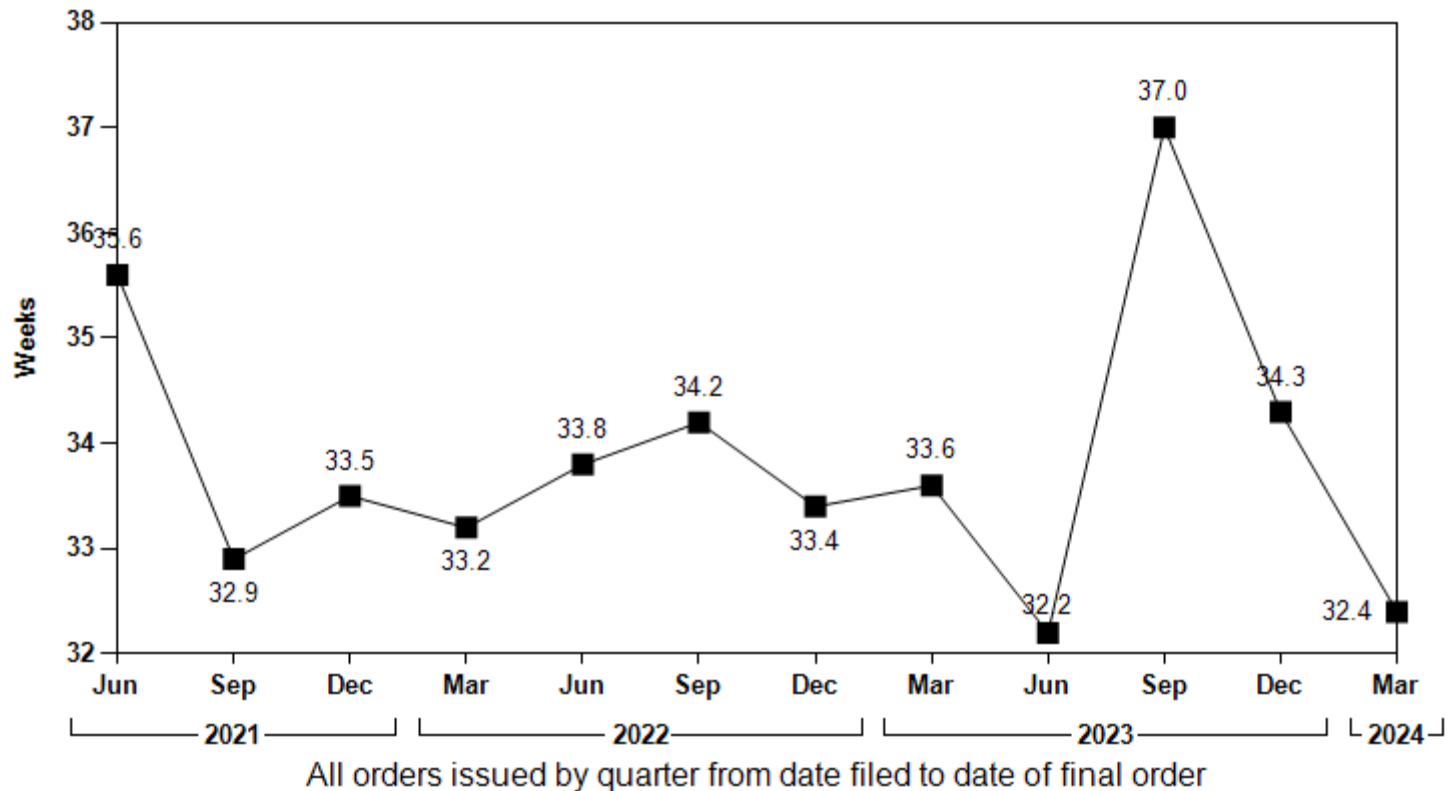
*Proposed Decision and Order

D & O* Time-Lag by Quarter

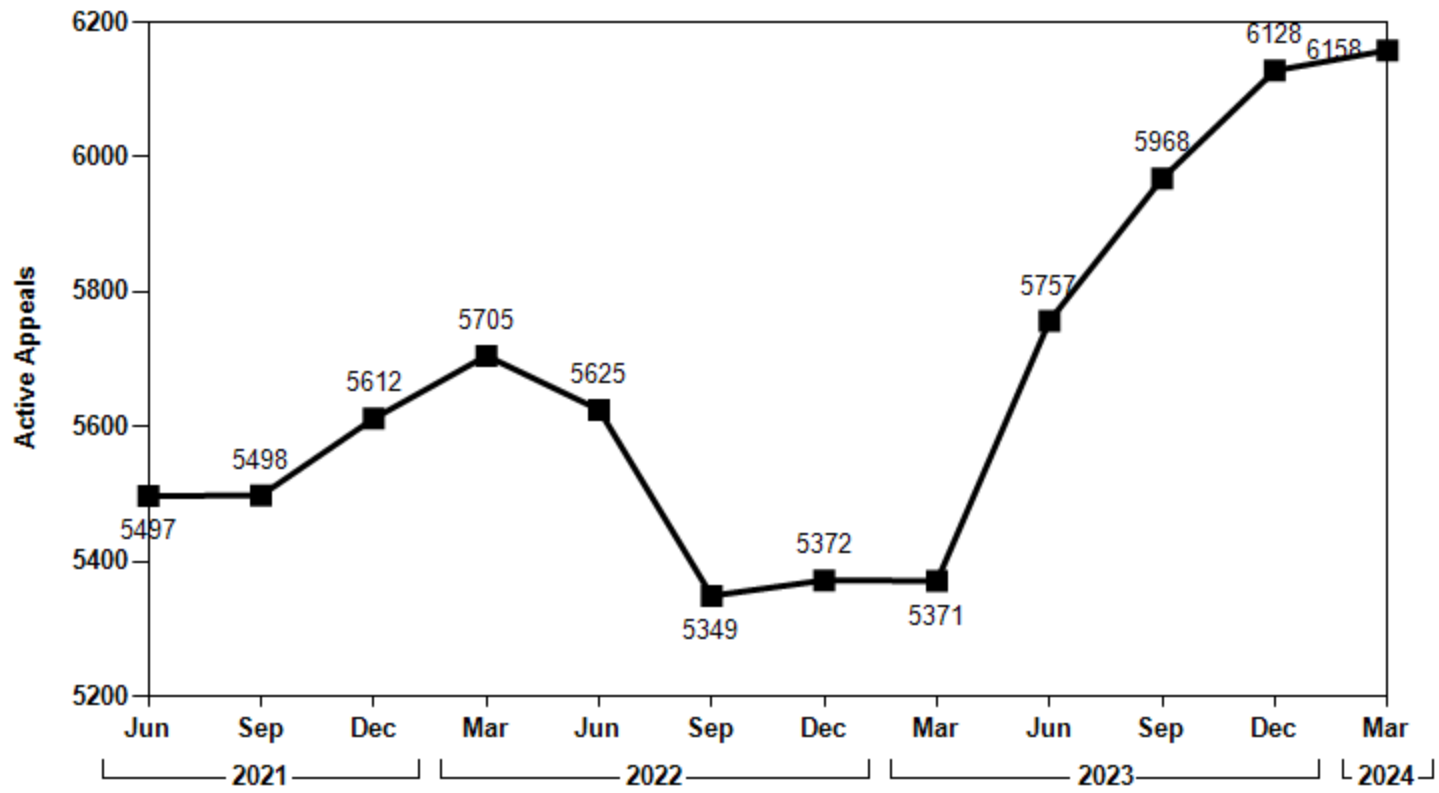


*Decision and Order

Quarterly Average Weeks to Completion



Caseload at End of Quarter



Percentage of Final Orders Appealed to Superior Court - Quarterly

